

# Challenges and opportunities at the Route 19 terminals on Gabriola and in Nanaimo

Accommodate a larger vessel in the future

Explore options to reduce vehicle loading and unloading times

Improve waiting and boarding arrangements for passengers

Ensure safe movement of pedestrians, bus passengers, cyclists and traffic at road junction

Ensure that priority medical users get assured loading

Parking opposite pub creates gap in ferry line-up



Examine options to relocate parking

Improve facilities for buses, taxis and pick up/drop off traffic

Seek ways to reduce volume of traffic passing through the terminal area

Commercial parking at the pub blocks traffic and pedestrians

Improve safety for pedestrians and cyclists on North Rd.

Separate the ferry line-up from passing traffic

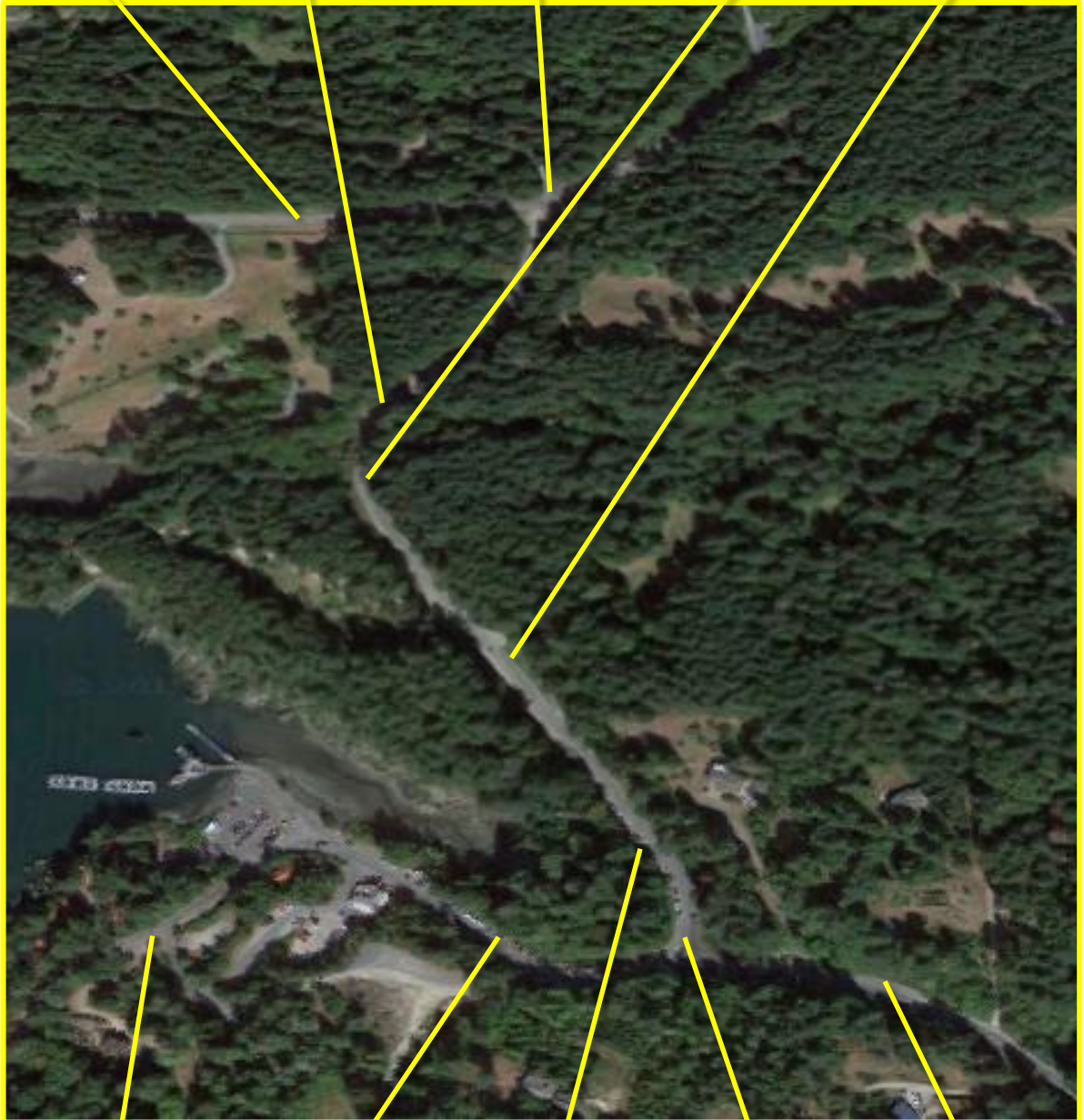
Inadequate turning space for ferry traffic on Ivory Way

Taylor Bay Road alignment and width not adequate for ferry line-up

Poor visibility and inadequate space at the Ivory Way U-turn point

Ferry overload limit is now close to bridge causing more U-turns

Original turning bay not suitable for oversized vehicles



Explore options to realign Easthom Road away from ferry terminal

Explore options for off-road vehicle waiting area

Road shoulder failure along embankment in several places

Improve traffic management at Taylor Bay Rd. junction

Need to accommodate oversized trucks within line-up

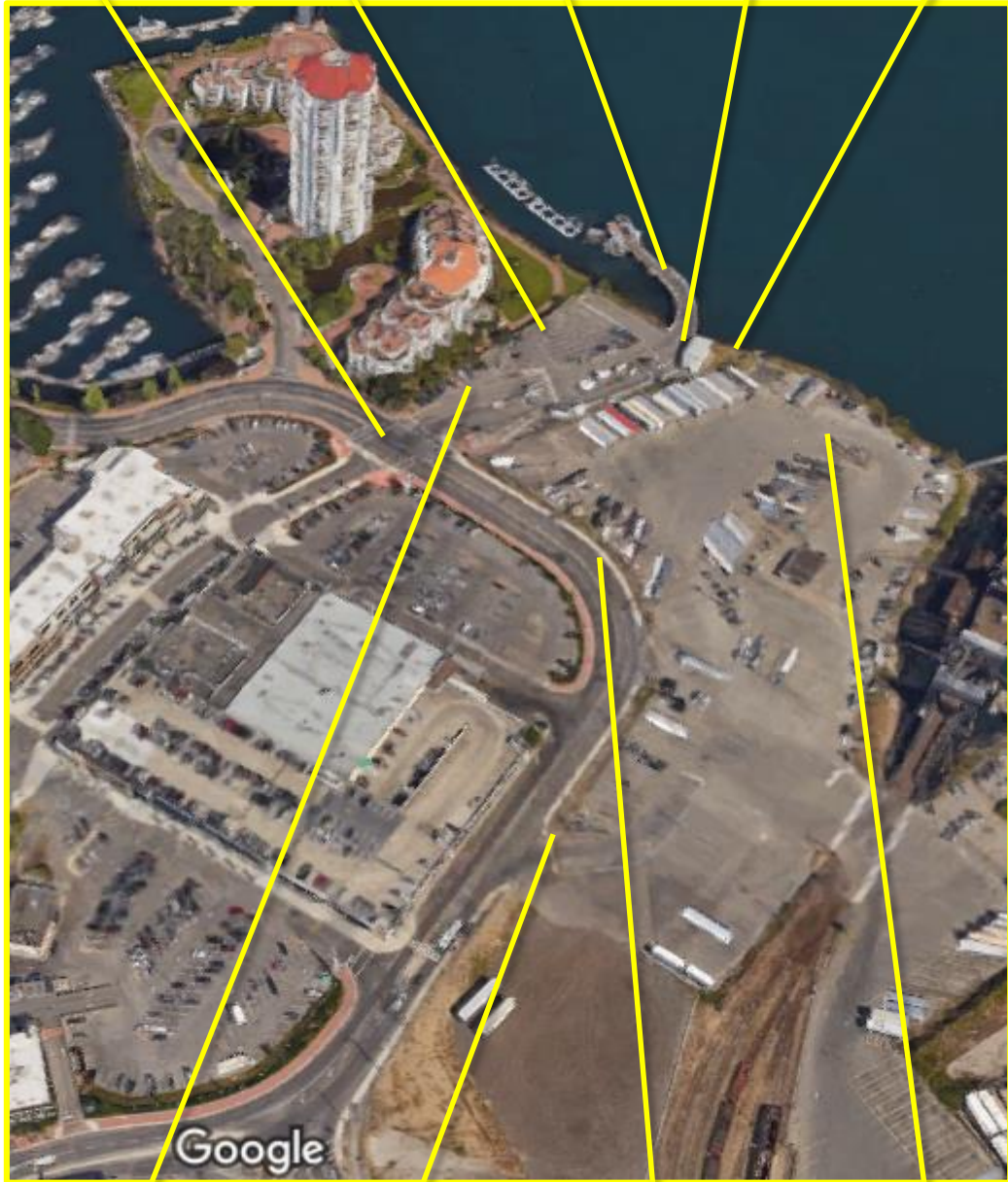
Need to improve management of traffic from Front St and Port Place Mall

Inadequate space for traffic volume in parking lot, especially for a larger ferry

Explore options to reduce vehicle unloading/ loading times

Improve waiting and boarding arrangements for passengers

Allow for Nanaimo's proposed waterfront walk



Improve facilities for taxis, airport shuttle and pick up/drop off traffic

Create access to proposed RDN transit exchange

Need to remove ferry overloads from Front Street

Need for pedestrian link to terminal for proposed passenger ferry to Vancouver